

## PAL 17 Brown Gelly Downs and Higher Langdon, St Neot, Historic Environment Action Plan



*The summit cairns of Brown Gelly from the N (Pete Herring, March 2013).*

### Location, geology and topography

Centred: Brown Gelly, SX 199730; Higher Langdon SX 206735

Extent: Brown Gelly 70 ha (172 acres); Higher Langdon 8 hectares (20 acres).

### *Geology*

Most of the PAL is on Granite, an igneous bedrock formed between 330.9 and 272.3 million years ago during the Carboniferous and Permian periods, but a relatively gently sloping area to the NE of Brown Gelly is on Microgranite, a granite with smaller crystals (British Geological Survey online viewer).

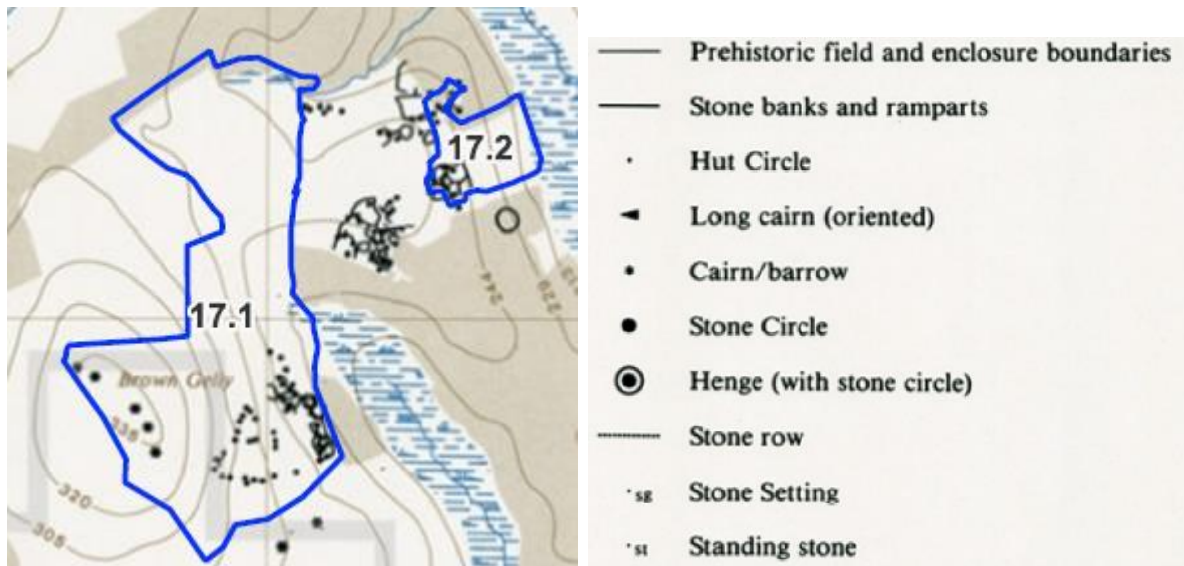
### *Topography*

Brown Gelly is one of Bodmin Moor's great hills, its broad plateau-like top reaches 342 metres (1122 feet). It is unusual in having its principal tor on its southern slopes, not at its summit. The eastern slope is very steep but it becomes gentler near its foot, and as noted above there is an area of relatively level ground to the NE.

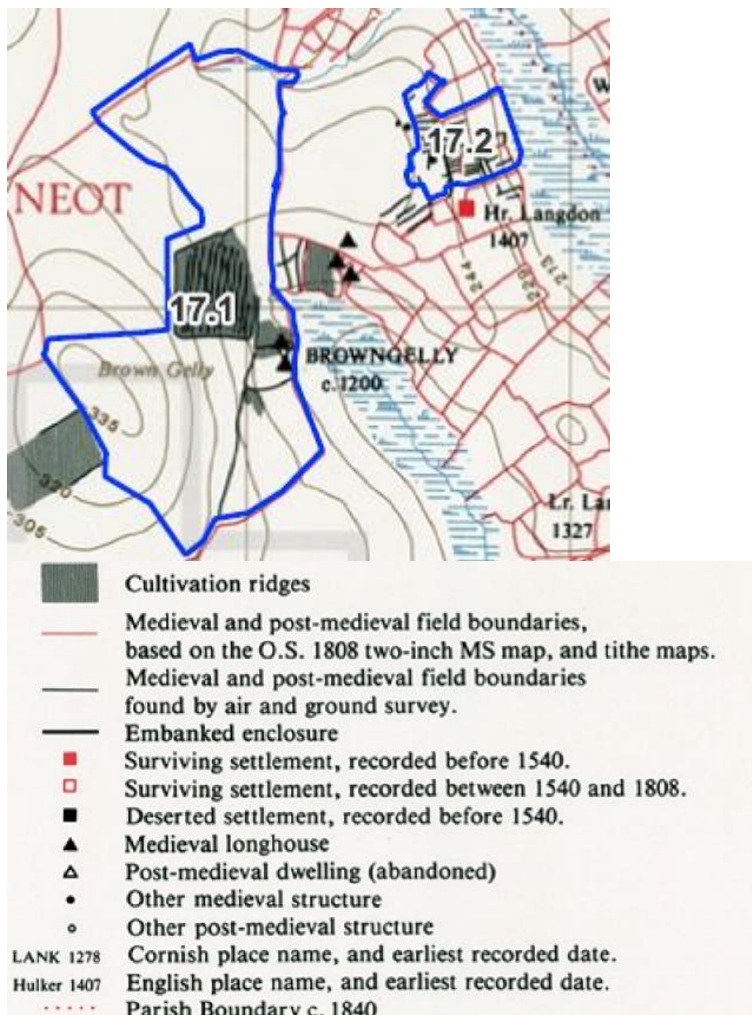
Higher Langdon is at the northern end of a much lower and more gently sloping downland to the east of Brown Gelly and the PAL is on the eastern slope

### *Current management and structures of ownership, commoners, etc:*

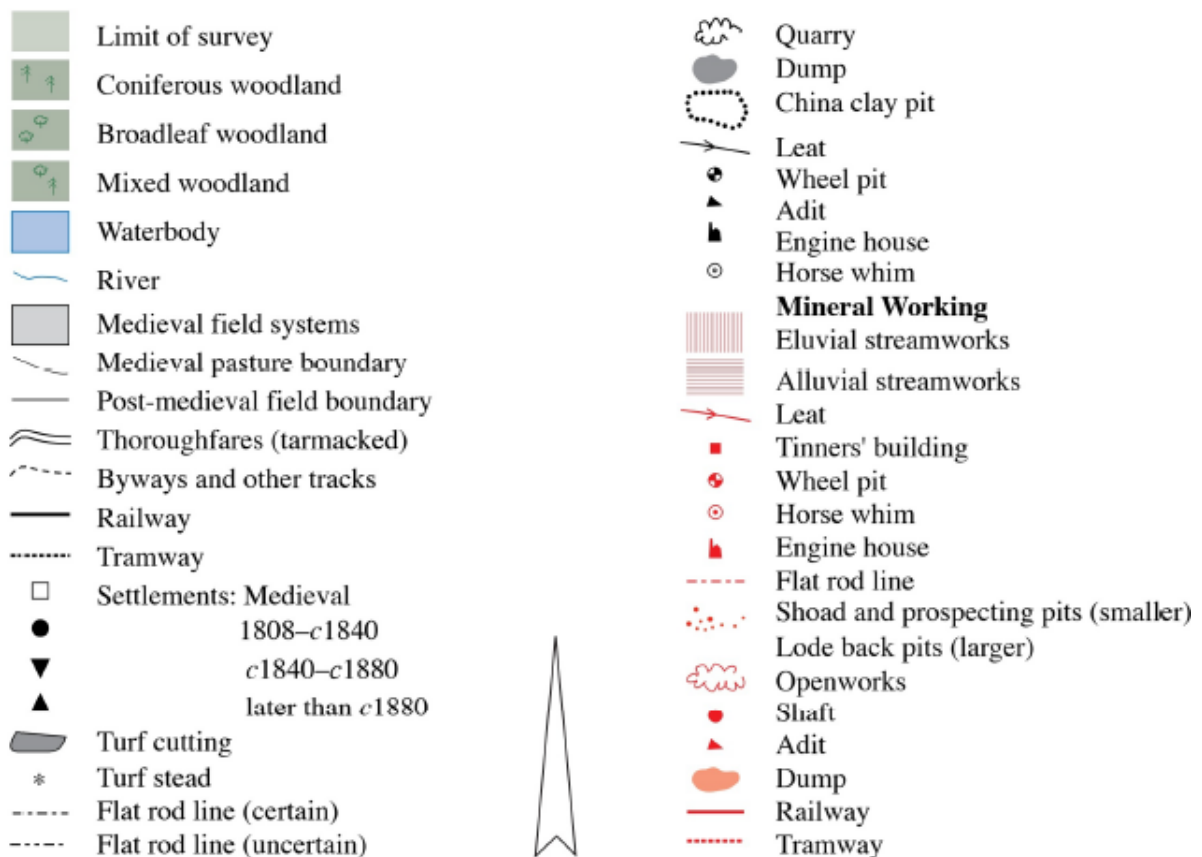
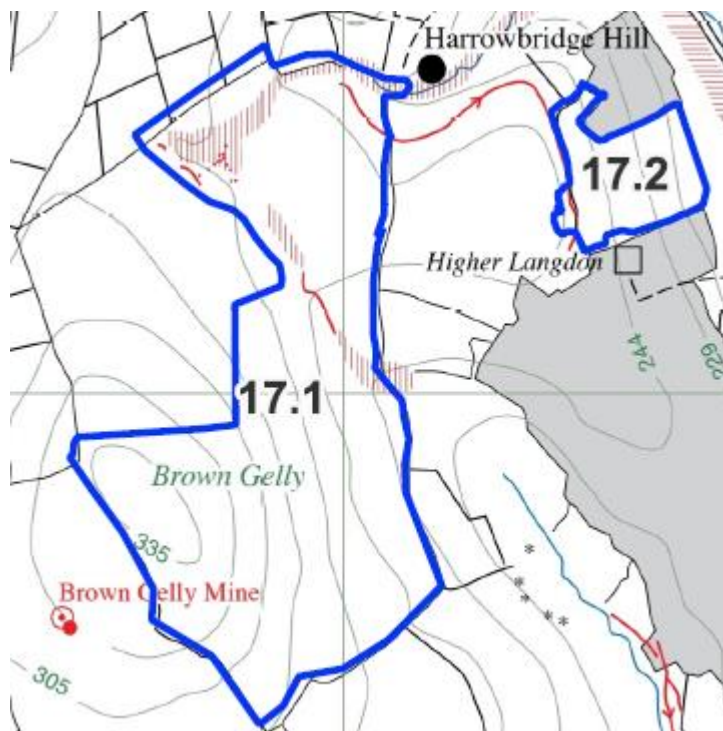
The whole area is privately owned land.



Extract from Prehistoric overview map (Johnson and Rose 1994, Map 1; reproduced with permission of Cornwall Council and Historic England).



Extract from Medieval and later landscape to c1808 overview map (Johnson and Rose 1994, Map 2; reproduced with permission of Cornwall Council and Historic England).



Extract from *Post-medieval and industrial overview map* (Herring et al 2008, Map 1; reproduced with permission of Cornwall Council and Historic England).

## Land use history

### *Pre-1748*

Most of Brown Gelly appears from the archaeological remains to have been effectively unenclosed open rough ground from early prehistory to the present.

High above the main part of the hill, lost to view as the convex slope created dead ground, was the arc of large Early Bronze Age cairns, great gathering places from which to look across the Moor, the framing and mimicking of Rough Tor and Brown Willy making visual association of Brown Gelly with those two other great hills of the western side of Bodmin Moor.

Roundhouse settlements on the lower eastern slopes of Brown Gelly were associated with small-scale curvilinear fields (the lower ones) or were in open ground, with no enclosures, and were therefore apparently pastoral. At lower-lying Higher Langdon, the prehistoric roundhouses were associated with accretive curvilinear fields.

Traces of early medieval transhumance huts have been noticed among the small prehistoric roundhouses.

In the later medieval period, a longhouse settlement was established on the lower eastern slopes of Brown Gelly, near to the source of the stream that has cut a sheltering valley on this side of the hill and two others were created at Higher Langdon. On Brown Gelly a large field subdivided into very regular strips was laid out on the lower NE slope and shorter strips were created immediately N of the hamlet, but most of the land within the main ring fence of Brown Gelly appears to have been rough pasture whereas the more sheltered land at Higher Langdon was more systematically subdivided into strips.

### *Thomas Martyn's 1748 map*

The hill was shown in profile, with two peaks, the lower western one representing Bunning's Park. Higher Langdon was shown occupied (as a Farm House) as was Gill House to the NW, and neither was reached by a lane, suggesting that the land itself was open.

### *c1810 OS drawing*

Brown Gelly was shown still largely open, though a pasture boundary had taken in part of the NW slope, including a tightly curving mouthful of the higher part of the hill, the land that was part of Gillhouse Farm. The N-S boundary running to the W of the summit cairns was not yet in place.

Higher Langdon farmstead was described as 'Ruins' and the land was shown as rough grazing broken into fields and croft delineated by broken lines.

### *c1840 Tithe Map*

By the time of the Tithe Map, the land was no longer operated as a common, though the Tithe Apportionment still contained echoes of that. The eastern part of Brown Gelly was a single large plot, 235 acres in extent, its land use described as Pasture and it had lost its settlement and had become part of Higher Langdon. All was occupied by William Henwood, possibly the William Henwood who was farmer, who lived at Draynes, about two miles S of Brown Gelly (1841 Census Returns). (Higher Langdon itself was occupied the family of an agricultural labourer, Thomas Worden.

But the land owners were multiple, three of them, and they were described as owning shares of the land:

- William Marshall 11 / 20
- Harris. 8 / 20
- The Rev Richard Gerveys Grylls, 1 / 20

This shareholding is likely to be a relic of the former communal set-up here, when land was held as shares, possibly in shares of 4 or 5.

#### *c1880 OS map*

Land cover shown as rough grassland with furze patches; the archaeological remains were not overgrown as roundhouses and longhouses were plotted. The leat was shown running through the PAL at Higher Langdon.

#### *c1906 OS map*

No significant change.

#### *Modern*

Still rough grazing land.

## Historic Environment

### Headlines

#### Brown Gelly

- Line of **5 large Early Bronze Age cairns** on summit of Brown Gelly that frame and mimic the hills or mountains of Rough Tor and Brown Willy when approached from the southern tor.
- Dense cluster of probably **Middle Bronze Age roundhouses** and **enclosures** on lower eastern slopes of Brown Gelly.
- **Group of smaller roundhouses** on higher eastern slopes of Brown Gelly, lacks enclosures and may be a **pastoral settlement**. Includes some ovoid houses or huts that may be **later transhumance huts**.
- **Later medieval longhouse hamlet** with two houses, outhouses and enclosures.
- **Large later medieval field subdivided by regular strips.**
- Areas of **lazybed cultivation**.
- Eluvial streamworks downhill of a line of early lode-back pits at the N edge of the PAL.
- Second **eluvial streamworks** in eastern valley.
- Fragmentary remains of a third **eluvial streamworks** in NE corner of PAL
- Area of **lode-back working** in NE part of PAL.

#### Higher Langdon

- Dense cluster of at least 19 presumably **Middle Bronze Age roundhouses with small enclosures** on the northern part of the Higher Langdon.
- A second dense cluster of at least 13 probably **Middle Bronze Age roundhouses with enclosures** on the southern part.
- Part of a more extensive **medieval strip field system**.
- A possible **later medieval building**, possibly a **longhouse**.
- A possibly medieval **leat** at the higher part of the PAL possibly served eluvial streamworks.

## Summary of main heritage assets

### *Prehistoric ceremonial and ritual*

#### Brown Gelly

The summit of Brown Gelly is a relatively flat plateau on which **five large Early Bronze Age cairns** were constructed with considerable effort (all stones had to be brought uphill) to create an early designed landscape that seems to have been filled with meaning and whose analysis indicates how the Moor was regarded as a unity in early prehistory.

From S to N:

MCO4213. Simple **bowl cairn**, 20m diameter, 2.6m high.

MCO4212. Damaged **kerbed ring cairn** 21m diameter 0.5m high, around a now low **central mound**.

MCO4211. **Very large round cairn** 27m diameter and 3.8m high on top of a **low platform cairn**.

MCO4210. **Rimmed platform cairn with a central mound**. The 2.5m wide and 1m high rim is set 3m inside the outer edge of the platform and the central mound 10m diameter and 1m high. The profile of the cairn is complex. A 1m high **standing stone** whose long axis aligns with the line of cairns was placed by the south-east side of the cairn.

MCO4209. **Bowl cairn** 21m diameter and 2m high.

'In a ground-breaking paper, Chris Tilley has drawn attention to the careful placing of the southern cairn on Brown Gelly's wide summit plateau. It was positioned at the point where people progressing up from the hill's only tor, located partway up the south side, obtain their first glimpse of Roughtor some nine kilometres to the north (Tilley 1995: 44). While displaying this relationship to members of the Devon Archaeological Society during a field trip, one of their number, Brian Tugwell, pointed out that the arrangement of the other cairns on the plateau when seen from this southern cairn not only framed the view of Bodmin Moor's two great mountains, Brown Willy and Roughtor, but the shapes of the cairns mimicked the profiles of the hills themselves (Fig. 8). Furthermore, it has since been noticed that the orientation of the 'Roughtor' cairn from the 'Brown Willy' cairn echoes that of the summits of the real hills. So at Brown Gelly there was framing of a significant view, representation of that view in the form of the cairns, and perhaps even a form of mapping of the relationship of the view's principal components. A similar framing and mimicking of Brown Willy and Roughtor by large hilltop cairns has also been noticed on Carburrow Tor, Warleggan' (Herring 2008, 74-76).

#### Higher Langdon

No remains

### *Prehistoric domestic and agricultural*

#### Brown Gelly

Group of at least **19 small roundhouses** without any associated field system, in an area of 5.5 hectares on middle eastern slope of Brown Gelly. Spaced between 10m and 20m apart, in rough lines that define a large open space. Houses range in

diameter from 2.5m to 6.4m, but most are less than 4.0m; **probably prehistoric transhumance huts**, not for whole households (MCO19039).

Group of at least **39 roundhouses and associated enclosures** covering 5 hectares on the lower eastern slope of Brown Gelly. Many houses are linked by sinuous boundaries and there are numerous small ovoid enclosures. Houses range in internal diameter from 3.5m to 9.5m, most with diameters of five to seven metres; a few are ovoid in plan. The small enclosures and absence of a field system suggests that this was a pastoral settlement (MCO21454).

#### Higher Langdon

Group of at least **19 roundhouses with a fragmentary associated field system** covering 4 hectares on eastern slope. Houses have interiors levelled into the slope and range from 3.0m to 5.8m internal diameter. Associated with four small plots or pounds and the fragmentary remains of low stony banks and lynchets (MCO19676).

Group of at least **13 roundhouses in a pattern of small curvilinear and accretive fields** extending over 2 hectares of high eastern slope. Most houses are built against boundaries and range in (internal) diameter from 3.0m to 6.0m but one is 8.0m. (MCO21057).

#### *Medieval*

#### Brown Gelly

Four huts within the higher prehistoric roundhouse group on the eastern slope have an oval plan, from 2.0m by 2.5m to a 5.3m by 4.8m, and are probably **Early Medieval transhumance huts** (MCO19039).

It has been noticed that a few of the round houses in the lower settlement are also ovoid, and they also be **Early Medieval transhumance huts** (MCO21454).

A small **hamlet of two longhouses** with associated ancillary buildings and yards is possibly the settlement of *Overa Brongello*, recorded in 1443. The buildings all lie close together, in a line along the slope. The **longhouses** are 17m and 21.5m long by 4.0m and 3.4m wide internally. Walling stands to 1.0m high. Between the two longhouses is a shared **townplace** and the **ancillary buildings** of each house lie outside this townplace (MCO).

The **fields** associated with the hamlet include a **large polygonal field** uphill to the NW 7 hectares in extent and surrounded by a ditched bank, and divided into **regular strips**, possibly measured using a Cornish rod. The earthwork remains of **lazybeds** survive on the ground and are visible on Lidar (MCO20674).

Several more patches of **lazybeds** survive to the N and S of the longhouse hamlet.

#### Higher Langdon

A **rectangular building** 11.3m long and 2.6m wide internally (MCO22176) within an area of strip fields (below) has been identified as a **longhouse** in the Scheduling description, but this would be significantly shorter and narrower than any other longhouses on Bodmin Moor and an alternative interpretation, perhaps as a field barn may be more likely.

A **strip field system** overlies the prehistoric settlements and enclosures of the Higher Langdon PAL. Sinuous banks form especially long narrow strips, many less than 10m wide. Described as covered by dense furze (MCO21059). Probably the strip fields of

the hamlet that preceded Higher Langdon Farm – a single farm would not need to subdivide their land so the strips indicate that this was a hamlet.

### *Industrial*

#### Brown Gelly

Three eluvial streamworks at Brown Gelly; one of these may be that referred to as 'Brongelli' in 1283 (Gerrard 1986).

Fine **eluvial streamworks** at N edge of PAL known as 'Harrowbridge Western' streamworks by Sandy Gerrard who surveyed it in detail (Gerrard 1986). In a gently sloping SW to NE trending dry valley. **Gerrard type B earthworks**, with a central **drainage level**. Small area of **type D earthworks**. **Reservoir** uphill to SW but no trace of leats. Line of pits delimiting the upper SW edge of the streamworks may be **lode-back workings**, indicating the position of the primary Harrowbridge lode. Some of these pits pre-date the leats leading from the reservoir. A documentary reference to a tinwork at 'Brongelli' in 1283 (MCO23838).

**Eluvial streamworks** in the shallow valley to NE of Brown Gelly (MCO23837), known as 'Harrowbridge Central' streamworks by Sandy Gerrard who surveyed it in detail (Gerrard 1986). Mainly **Gerrard Type B earthworks**. Evidence for two phases, in the earliest the earthworks west of a later **dam** were produced.

**Eluvial streamworks** in the shallow valley NE of Brown Gelly, known as 'Harrowbridge Eastern' streamworks by Sandy Gerrard who surveyed it in detail (Gerrard 1986). Mainly **Gerrard Type C earthworks**. A **dam** upstream of the main workings.

### *Post-medieval and modern*

The Brown Gelly part of the PAL is an area of rough ground surrounded by substantial stock-proof hedges and walls. Several lanes open onto it, bringing livestock from the old road between Liskeard and Camelford on the S corner of the PAL. A waymarking inscribed stone is believed to have stood here in living memory indicating the road to Camelford (Jill Thomas, pers. comm.).

### **Significance of landscape visibility**

The summit cairns are key elements of one of the most remarkable pieces of Early Bronze Age landscape design on the Moor. A relatively clear hill top has had an arc of large round cairns, some with complex architecture (platform cairns with banks forming rims around the edges of platforms and with bowl cairns either centrally or eccentrically placed on top. When climbing to the plateau from the hill's only tor, on the southern slope, the first cairn is reached precisely when Rough Tor's tors emerge beyond the northern skyline, and the largest cairn mimics the shape of Brown Willy while the two northern cairns together mimic the complex profile of Rough Tor and Showery Tor (Herring 2008).

The archaeological remains on the lower slopes of Brown Gelly and at Higher Langdon are low-lying and vulnerable to being shrouded by scrub and bracken.

## Designations

### Historic Environment

#### *Scheduled Monuments*

##### Brown Gelly

1007478      **Round cairn on Browngelly Downs, 625m ESE of Higher Gillhouse Farm**

1007479      **Embanked platform cairn with central mound on Browngelly Downs, 680m ESE of Higher Gillhouse Farm**

1007480      **Round cairn on Browngelly Downs, 825m ESE of Higher Gillhouse Farm**

1007481      **Banked cairn on Browngelly Downs, 880m ESE of Higher Gillhouse Farm**

1007470      **Round cairn on Browngelly Downs, 940m ESE of Higher Gillhouse Farm**

1007770      **Prehistoric settlements and field system with adjacent medieval settlement, field systems, boundaries and tin streamworks on the Brown Gelly Downs**

##### Higher Langdon

Part of 1007475      **Prehistoric field systems, enclosure, hut circles and rounds, with adjacent medieval settlement, longhouse and field system on Higher Langdon Farm**

#### *Heritage Assets assessed as being of National Importance*

The following sites which were assessed as satisfying the criteria for National Importance using the criteria employed by the MPP and were therefore proposed as candidates for formal assessment for Scheduling during the Evaluation of Bodmin Moor (Rose and Herring 1990).

Following the guidance in the National Planning Policy Framework (NPPF) these non-designated heritage assets are demonstrably of equivalent significance to Scheduled Monuments. 'Substantial harm to or loss of [these] should be wholly exceptional' (NPPF, para 206).

- Fine **eluvial streamworks** at N edge of PAL known as 'Harrowbridge Western' streamworks (MCO23838).

## Natural environment designations:

#### *Sites of Special Scientific Interest*

The lower eastern part of the Higher Langdon part of the PAL touches the SSSI along the Fowey Valley's marshes: 1001433, Upper Fowey Valley.

#### *Special Areas of Conservation*

NA

#### *County Wildlife Site*

Yes, part of NC/CN7/S6.1, Browngelly Downs.

## *Cornwall Conservation Areas*

NA

## Other designations

### *Common Land*

Not common land.

### *CROW Access Land*

Yes, whole PAL.

### *Registered rights of way.*

No.

### *Neighbourhood Development Plans*

No.

## Change between 2005 and 2022

(Overview derived from comparison of CCC 2005 aerial photography, available as a basemap on the Cornwall and Scilly Historic Environment Record, and the Airbus 2025 satellite imagery as viewed from Google Earth aerial photos.)

- Relatively little change on Brown Gelly compared with most other privately held PALs.
- Still largely grassland (molinia) on the higher slopes of Brown Gelly.
- Some poaching of ground immediately N of the extended covered yard at Higher Langdon.

## Issues

Spread of furze.

- Reducing the diversity of the ancient rough grasslands and their flora and fauna, including their invertebrates.
- Obscuring the more ephemeral archaeological remains.
- Will begin to cause erosion as vehicles and livestock are confined to ever narrower tracks.
- Encourage tick-borne diseases in livestock and wild fauna.

## Opportunities

To better guide grazing levels on the common by closer understanding of the flora and fauna of the ancient semi-natural grasslands.

## Recommendations

### General approach

Retain open ancient semi-natural grassland with easy movement in all directions. Keep the important remains of the Lamlavery medieval hamlet and its fields clear of furze.

## Specific recommendations

- Address the growth of furze on the roundhouse settlement and cairns at summit.
- Adjust grazing to push back the conversion to furze.
- Further archaeological recording.

## Adjusting the extent of the PAL:

LIDAR has been examined. No change required to PAL extent; it includes the principal known archaeological remains on Brown Gelly or Higher Langdon.

## References

- Gerrard, GAM, 1986 *The early Cornish tin industry: an archaeological and historical survey*, unpublished PhD thesis, Saint David's University College, University of Wales
- Herring, P, 2008 Commons, fields and communities in prehistoric Cornwall, in A Chadwick, ed, *Recent approaches to the archaeology of land allotment*, Oxford: British Archaeological Reports, Int Ser, **1875**, 70-95
- Tilley, C 1995 Rocks as resources: landscape and power, *Cornish Archaeology*, **34**, 5-57

## Appendix 1 2007 PAL text

### 17Browngelly Downs and Higher Langdon

#### *Historic Environment*

This is a landscape of extensive prehistoric settlement, with numerous discreet clusters of round houses. On the hilltop above is a distinctive group of cairns, possibly the ritual focus of the settlements. The rich and diverse landscape also includes a medieval settlement with associated fields and tin streaming complexes.

The largest group, covering approximately 5 ha, consists of some 39 individual houses and associated enclosures. Many of the houses are linked by sinuous boundaries and the settlement incorporates a number of small enclosures. The houses huddle close together in a broad (up to 100m wide) band along the hill slope. The houses range in internal diameter from 3.5m to 9.5m, most with diameters of five to seven metres. Many of the houses are built against boundaries, turf covered boulder and stone banks or crude boulder lines which link up the houses and form enclosures up to a third of a hectare in area. The number of enclosures and the absence of a field system suggest that this settlement was associated with pastoral activity.

Close to this settlement is another comprising of up to nineteen small houses, without any associated field system. The settlement extends over an area of approximately five and half hectares. Within this, the houses are generally spaced between 10 and 20m apart, in rough lines which appear to enclose a large open space. They range in diameter from 2.5m to 6.4m, but most are 2m to 4m. Some may be early medieval transhumance huts, and there are several as yet unsurveyed transhumance huts near the eastern side of the hill's summit plateau.

The remaining group of houses are located within the small eastern PAL block at Higher Langdon. The larger of two settlements comprises thirteen round houses set against a series of small fields or enclosures and extending over an area of approximately two hectares. The houses are all grouped closely together and only a few are free-standing; the majority are built against boundaries. They range in (internal) diameter from 3m to 8m, but the majority are less than 6m. The associated field system which links and encloses the houses consists of five small (average 0.25 hectare) sub-rectangular fields or enclosures, surviving as boulder/stone banks and stony lynchets. A further cluster of around 11 houses to the north are part of a larger settlement which extends into the unmapped farmland between the two PAL blocks.

A group of cairns is located in a rough line along the ridge of Brown Gelly; the slight curve in the line reflecting the hill's shape. All the cairns are large ones, 15m to 28m in diameter, and of various types. Three are cone shaped mounds, one is a rimmed platform with central mound while the fifth was possibly a platform cairn. As elsewhere on the moor, these cairns were located to be prominent in the surrounding landscape and may be associated with the settlements to the east.

The PAL also includes a deserted medieval settlement consisting of two long houses with associated ancillary buildings and yards. This is possibly the settlement of *Overa Brongelloi*, which was recorded in 1443. The buildings all lie close together, in a line along the slope. Between the two long houses lies a 30m long open space which may have acted as a town place. The associated field system comprises three contrasting units. To the north west of the settlement is a large rectangular field, 240m by 300m, covering approximately 7 hectares, enclosed by a ditched bank. This is subdivided by 0.5m wide, 0.2 - 0.3m high turf-covered stony lines into strips averaging 25m wide. Adjoining the settlement, to the north and south west, are two rectangular fields, containing traces of ridge and furrow cultivation but not subdivided into strips like the north west field. That to the south west measures 130m by 140m and is enclosed by a boulder and stone wall with slight outer ditch. South of these are further slight traces of ridging, not enclosed by any well defined field-boundaries.

West of Harrowbridge on the northern edge of the PAL are alluvial and eluvial streamworks with a centrally positioned drainage level. One definite and another possible reservoir served this site, although there is no trace of the associated leats. A documentary reference to a tinwork at '*Brongelli*' in 1283 may refer to this site.

In reality this PAL extends beyond the area highlighted on the mapping, taking in the surrounding farmland, especially the settlement to the east, and as such joining the two areas that make up this one PAL. Such land is beyond the remit of this current study and so is omitted. It remains, however, of great importance to the overall understanding of this part of the moor.

#### *Natural Environment*

#### **Notified Features:-**

**Assemblages of breeding birds** - Upland moorland and grassland with water bodies

**Otter** (*Lutra lutra*)

**Nationally rare and scarce dragonfly species** - Small red Damselfly (*Ceriagrion tenellum*)

#### **Outstanding Dragonfly Assemblage**

**Wet Heath** – Deer Grass – Cross-leaved Heath wet heath (M15 - *Scirpus cespitosus* - *Erica tetralix* wet heath)

**Blanket Mire** – Deer Grass – Hare's-tail Cotton-grass blanket mire (M17 - *Scirpus cespitosus* - *Eriophorum vaginatum* blanket mire).

**Valley Mire and other mires** Purple Moor-grass – Tormentil mire (M25 - *Molinia caerulea* - *Potentilla erecta* mire), Bottle Sedge – bog moss mire (M4 - *Carex rostrata* - *Sphagnum recurvum* (fallax) mire), Star Sedge – bog moss mire (M6 - *Carex echinata* - *Sphagnum recurvum* (fallax) *lauriculatum* (*denticulatum*) mire), Bottle Sedge – Marsh Cinquefoil swamp (S27 - *Carex rostrata* - *Potentilla palustris* swamp).

**Acid Grassland** – Bent – Fescue grassland (U4 - *Festuca ovina* - *Agrostis capillaris* - *Galium saxatile* grassland)

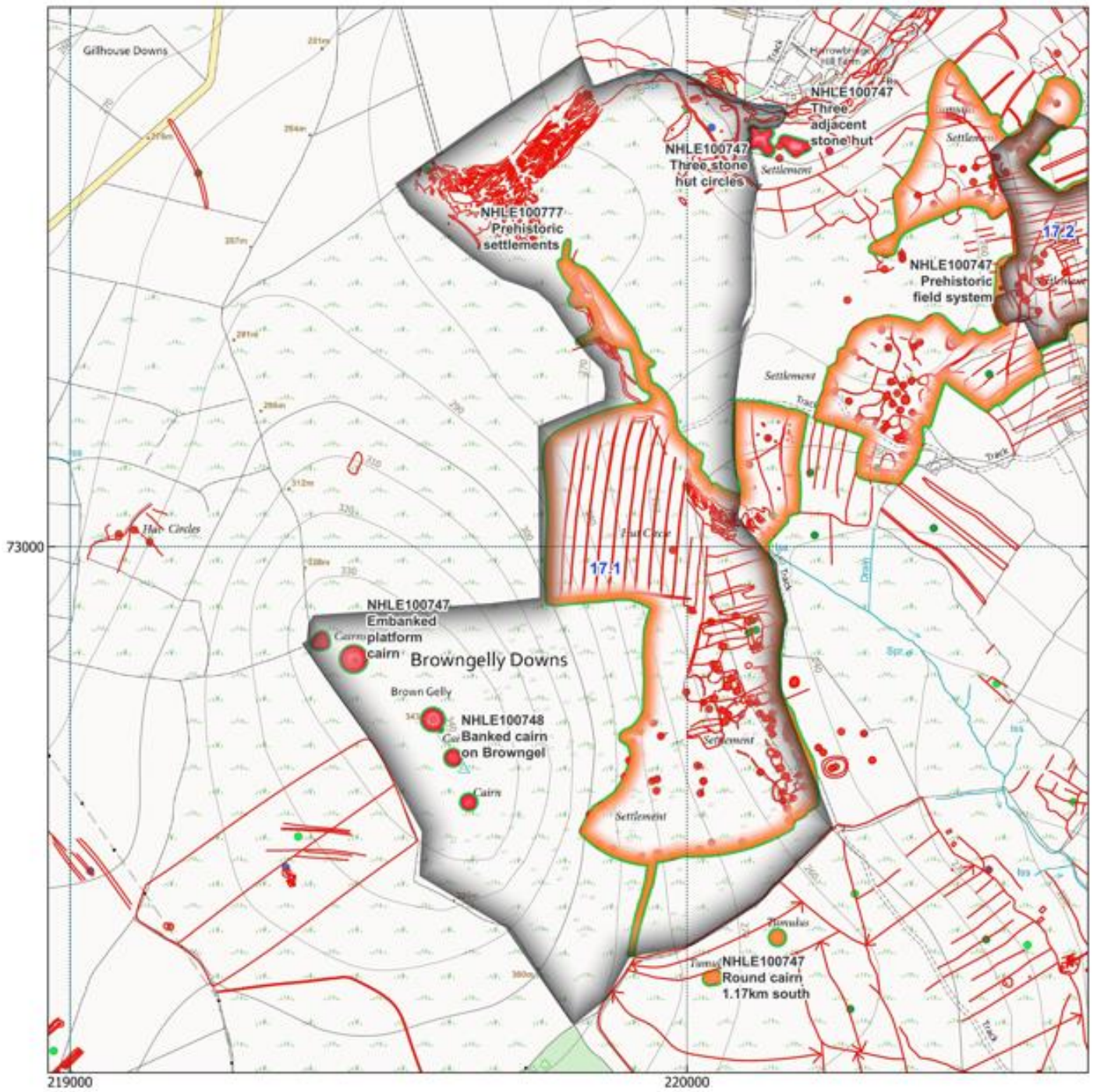
**Wet woodland** – Grey Willow – Marsh Bedstraw woodland (W1 - *Salix cinerea* - *Galium palustre* woodland).

Specific notes:- Valley mires contain extant **Marsh Fritillary** (*Eurodryas aurinia*) colony.

#### *Designations*

A large part of this PAL is Scheduled, reflecting its importance as a coherent landscape (Nos. 15259, 15262 to 15267).

Upper Fowey SSSI



- PAL Areas
- Scheduled Monuments
- Scheduled Monuments @ Risk
- Feature Groups
- Prehistoric
- Medieval
- Post Medieval
- Aerial Mapping Transcriptions
- CSHER point data
- Prehistoric
- Early Medieval
- Romano British
- Medieval
- Post Medieval
- Modern

Dominant Habitat: Dry Acid Grassland with extensive bracken cover

Habitat Change: Little

Notes: Relatively little change on Brown Gelly compared with most other PALs. Still largely grassland (molinia) on the higher slopes of Brown Gelly. Some poaching of ground immediately N of the extended covered yard at Higher Langdon.

## PAL 17 Browngelly Downs and Higher Langdon 1

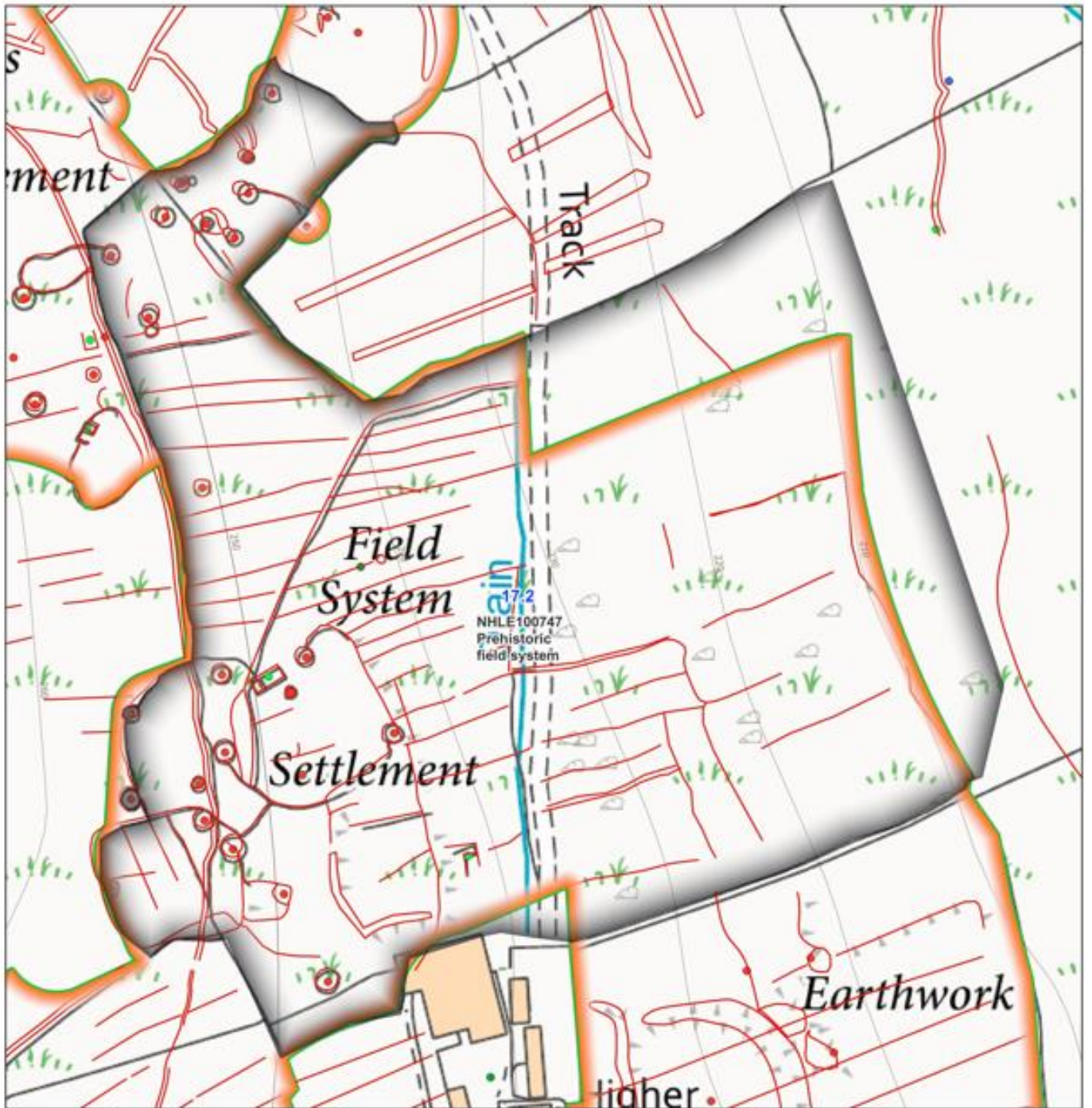
[www.statement-heritage.com](http://www.statement-heritage.com)

Cornwall Council

Contains OS Data © Crown Copyright, All Rights Reserved  
2025 Ordnance Survey  
AC000817921

0 100 200 m





- PAL Areas
- Scheduled Monuments
- Scheduled Monuments @ Risk
- Feature Groups
  - Prehistoric
  - Medieval
  - Post Medieval
- Aerial Mapping Transcriptions
- CSHER point data
  - Prehistoric
  - Early Medieval
  - Romano British
  - Medieval
  - Post Medieval
  - Modern

Dominant Habitat: Dry Acid Grassland with extensive bracken cover

Habitat Change: Medium

Notes: Relatively little change on Brown Gelly compared with most other PALs. Still largely grassland (molinia) on the higher slopes of Brown Gelly. Some poaching of ground immediately N of the extended covered yard at Higher Langdon.

## PAL 17 Browngelly Downs and Higher Langdon 2

